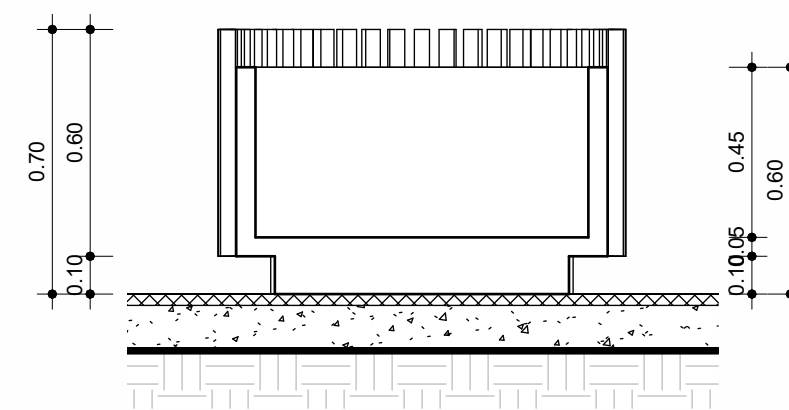
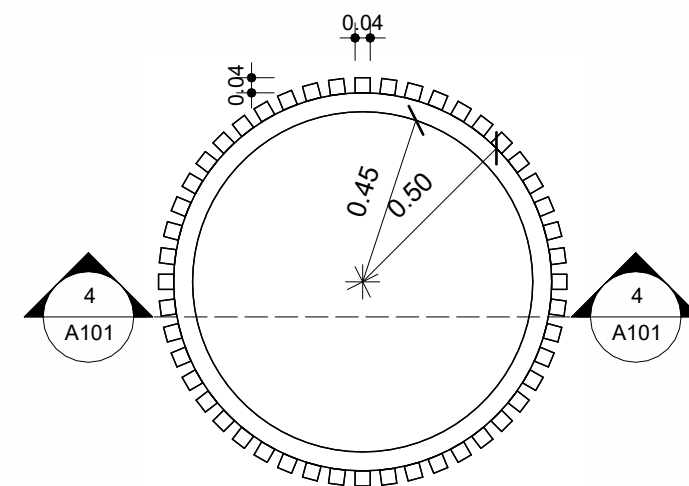


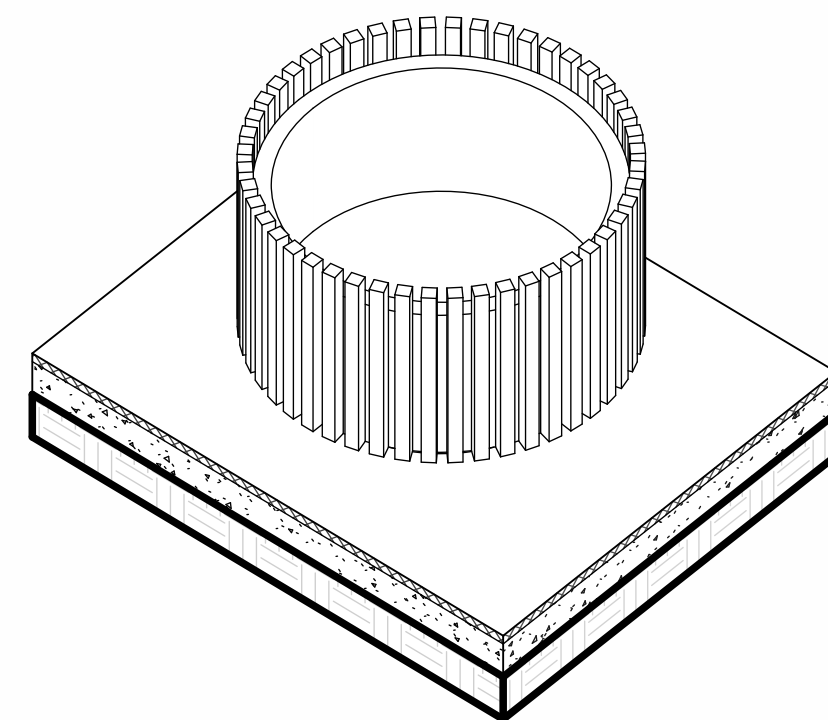
2 CORTE A/A  
1 : 100



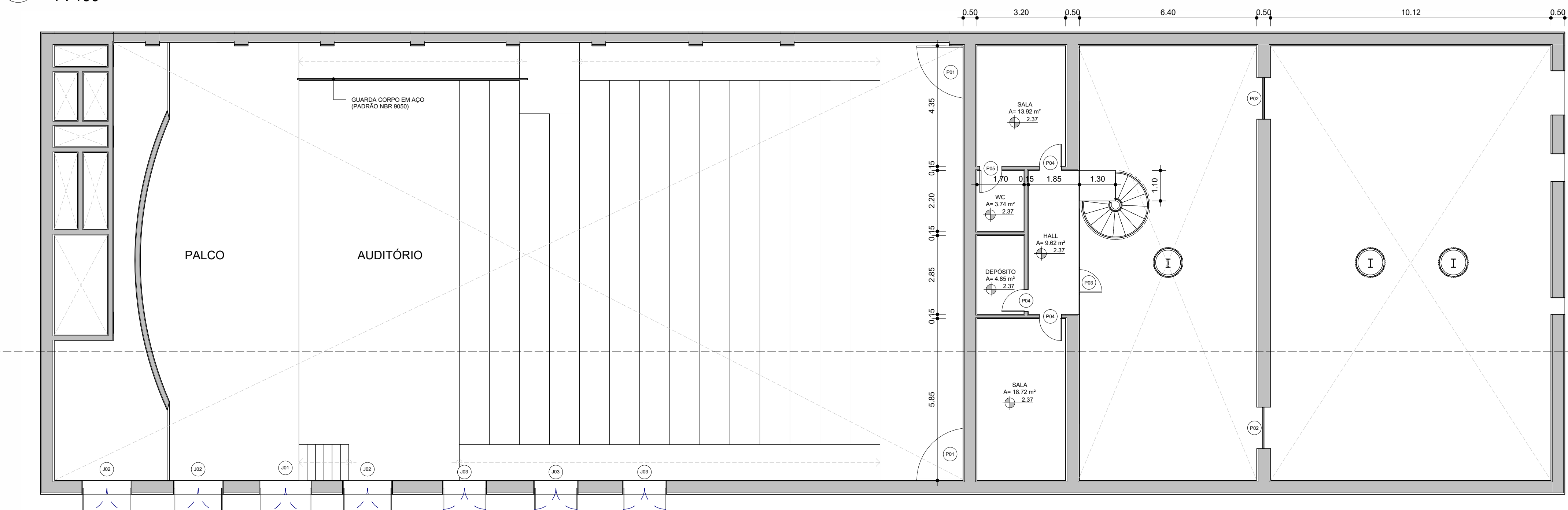
4 CORTE - DETALHE  
1 : 20



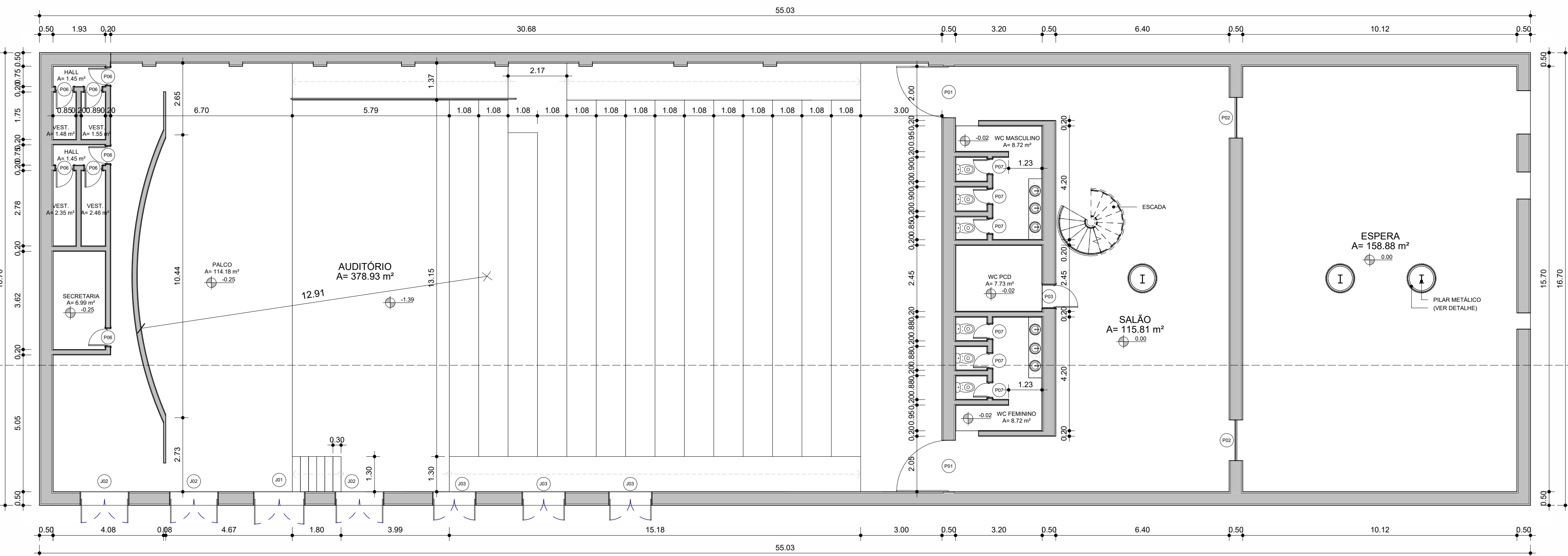
3 PLANTA - DETALHE  
1 : 20



5 3D - DETALHE



6 MEZANINO  
1 : 100



1 PLANTA BAIXA  
1 : 100

QUADRO DE JANELAS				
Tipo	Largura	Altura	Altura Peitoril	QTDE
J01	1.90	3.30	0.95	1
J02	1.80	3.30	0.95	3
J03	1.60	3.30	0.95	3
Total: 7				

QUADROS DE PORTAS			
Tipo	Altura	Largura	Quantidade
P01	2.10	1.90	2
P02	4.30	1.50	2
P03	2.11	0.90	1
P04	2.40	0.80	3
P05	2.40	0.80	1
P06	2.11	0.70	7
P07	2.11	0.60	6
Total: 22			



PROJETO:  
TEATRO MUNICIPAL

BAIRRO:  
CENTRO - CAXIAS- MA.

PROPRIETÁRIO:  
PREFEITURA MUNICIPAL DE CAXIAS/MA.

DESENHISTA:  
LUCAS HAMURABI

ESCALA:  
COMO INDICADO

FOLHA: